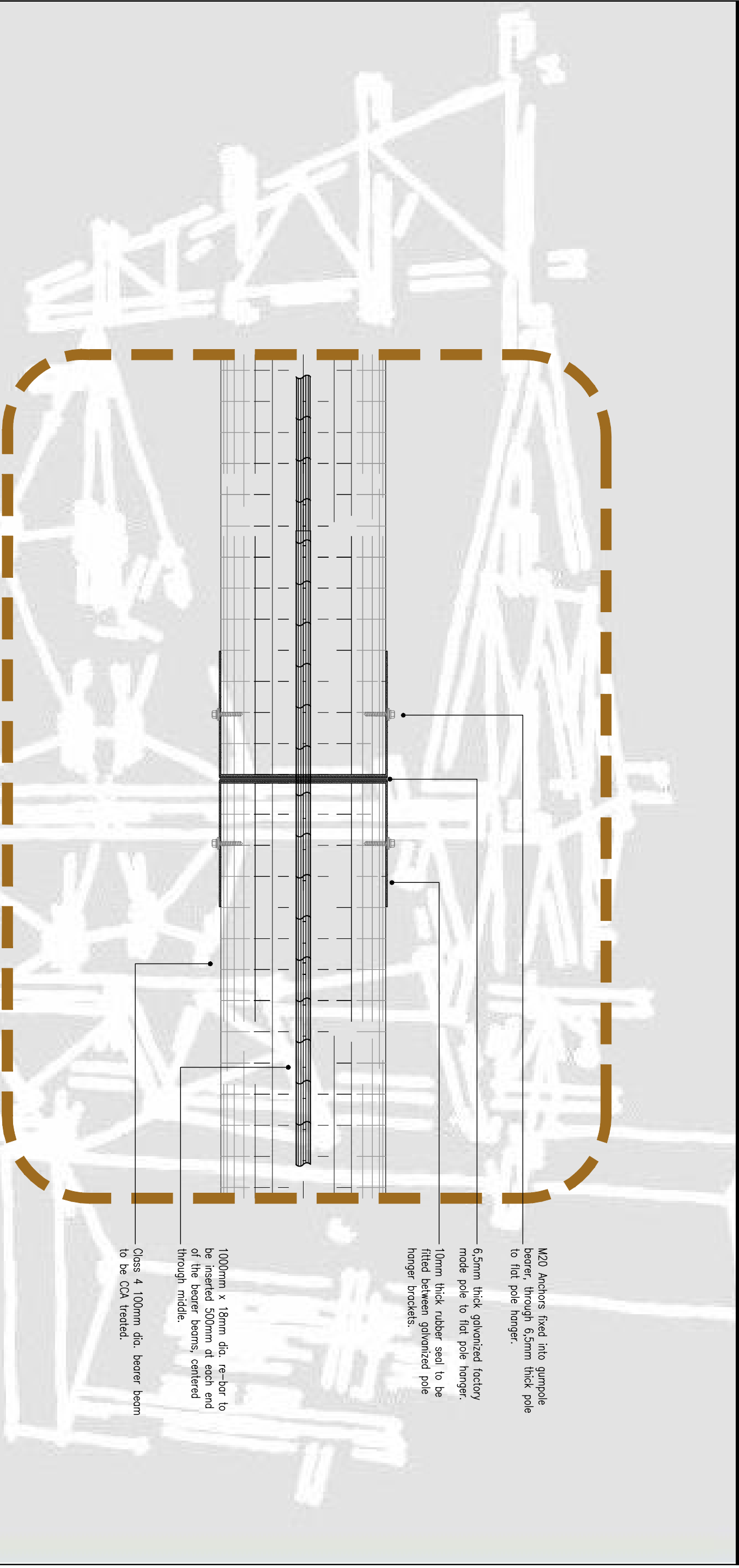


## CONSTRUCTION DETAILS



M20 Anchors fixed into gumpole bearer, through 6,5mm thick pole to flat pole hanger.

6,5mm thick galvanized factory made pole to flat pole hanger.

10mm thick rubber seal to be fitted between galvanized pole hanger brackets.

1000mm x 18mm dia. re-bar to be inserted 500mm at each end of the bearer beams, centered through middle.

Class 4 100mm dia. bearer beam to be CCA treated.

### DETAIL 2

SCALE 1:5